



# EMS LAKE

## MAIN PARTICULARS

**Type:** \_\_\_\_\_ General Cargo  
**Built:** \_\_\_\_\_ 2024  
**Yard:** \_\_\_\_\_ KTU Shipyard, Batam, Indonesia  
**Class:** \_\_\_\_\_ RINA  
**IMO:** \_\_\_\_\_ 9978913  
**Flag:** \_\_\_\_\_ Antigua & Barbuda  
**Callsign:** \_\_\_\_\_ V2IE2

## GENERAL DIMENSIONS

**Length o.a.:** \_\_\_\_\_ 93.50 m  
**Breadth:** \_\_\_\_\_ 14.40 m  
**Draught:** \_\_\_\_\_ 5,18 m  
**Airdraft:** \_\_\_\_\_ 22,00 m – in full ballast  
**GT/NT:** \_\_\_\_\_ 2995t/1587t  
**DWAT:** \_\_\_\_\_ 4400t

Member of **ems.group**

**EMS Shipmanagement GmbH & Co. KG**  
Hafenstraße 15 · 26789 Leer · Germany

Phone: +49 (0) 491 928 155  
Email: [info@ems-shipmanagement.com](mailto:info@ems-shipmanagement.com)

## MACHINERY/SPEED

**Main Engine:** \_\_\_\_\_ 1.176 kW at 395 rpm  
**Auxiliary generators:** \_\_\_\_\_ 3 x 206 kW  
**Emergency generator:** \_\_\_\_\_ 135 kW with harbour mode  
**Bow thruster:** \_\_\_\_\_ 215 kW  
**Propeller:** \_\_\_\_\_ fixed pitch  
**Speed/consumption:** \_\_\_\_\_ (laden) 9.5 kn/4.8 mts per day  
 \_\_\_\_\_ (ballast) 10 kn/4.2 mts per day  
**Port consumption:** \_\_\_\_\_ abt 0.4 mts  
**Fuel grades:** \_\_\_\_\_ MGO

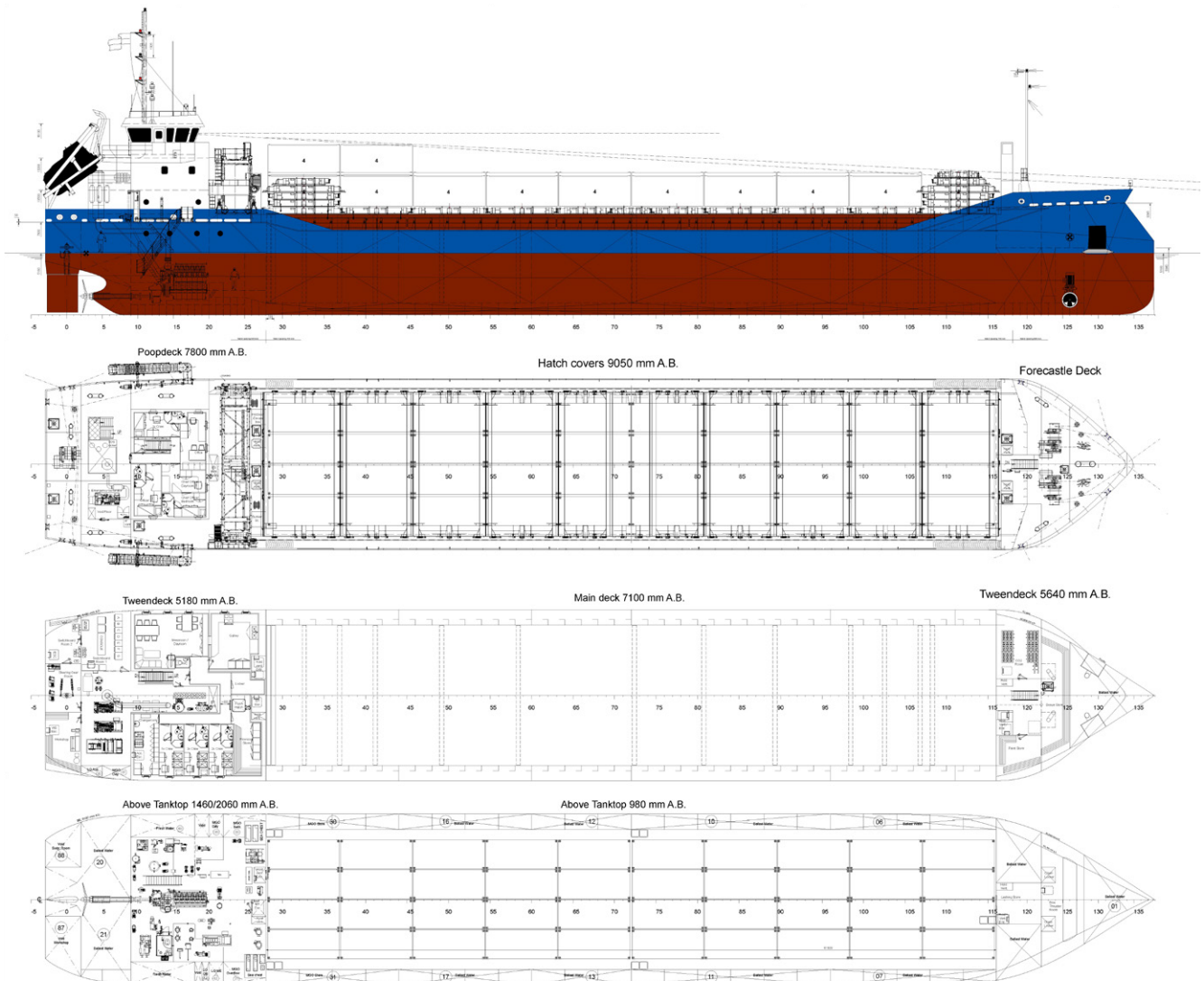
## CAPACITY

**MGO:** \_\_\_\_\_ 205 cbm  
 \_\_\_\_\_ incl. day- and settling tanks  
**Fresh water:** \_\_\_\_\_ 54 cbm  
**Ballast water:** \_\_\_\_\_ 2,100 cbm

## HOLD PARTICULARS

**Hold:** \_\_\_\_\_ 61,60 x 11,80 x 7,40 m  
**Hatch:** \_\_\_\_\_ 61,60 x 11,80 m  
**Bulkheads:** \_\_\_\_\_ 2 – moveable  
**Tanktop max load:** \_\_\_\_\_ 15 ts/sqm  
**Hatchcovers max load:** \_\_\_\_\_ 2 ts/sqm  
**Hatchcovers:** \_\_\_\_\_ Pontoon type  
**Grain/Bale Capacity:** \_\_\_\_\_ abt 189,392 cbft  
**Container intake:** \_\_\_\_\_ 128 TEU max  
 \_\_\_\_\_ in hold 80 TEU  
 \_\_\_\_\_ on hatches 48 TEU  
**Hold ventilation:** \_\_\_\_\_ 6 x per hour  
**IMBC Code:** \_\_\_\_\_ fitted  
**Cement feeding holes:** \_\_\_\_\_ n/a

All details given in good faith, but not guaranteed.



Member of **ems.group**

**EMS Shipmanagement GmbH & Co. KG**  
 Hafenstrabe 15 · 26789 Leer · Germany

Phone: +49 (0) 491 928 155  
 Email: [info@ems-shipmanagement.com](mailto:info@ems-shipmanagement.com)