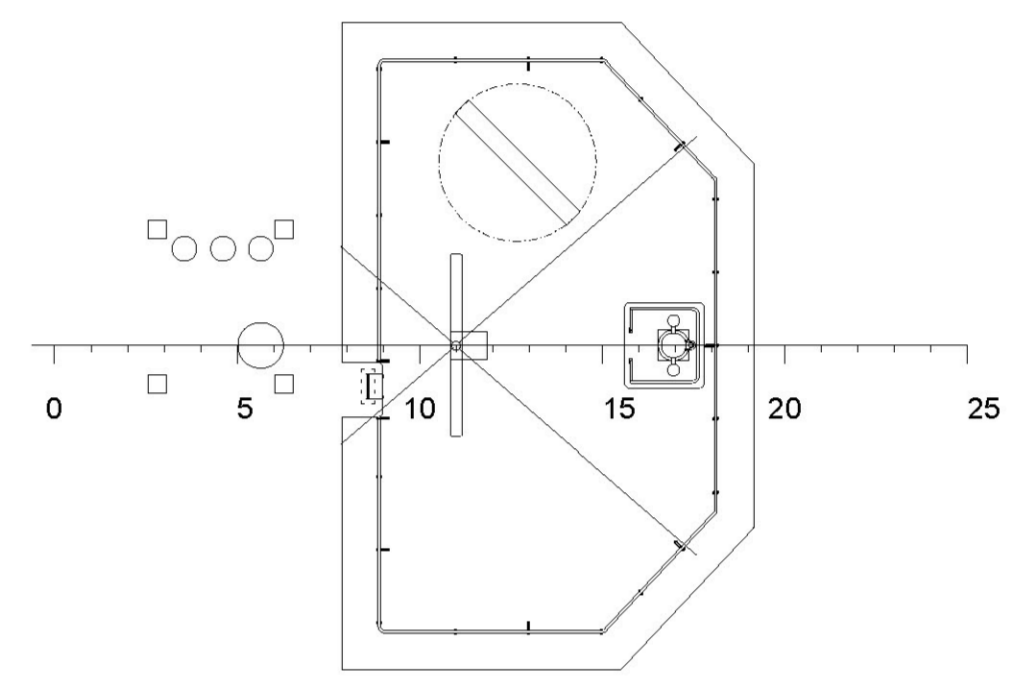
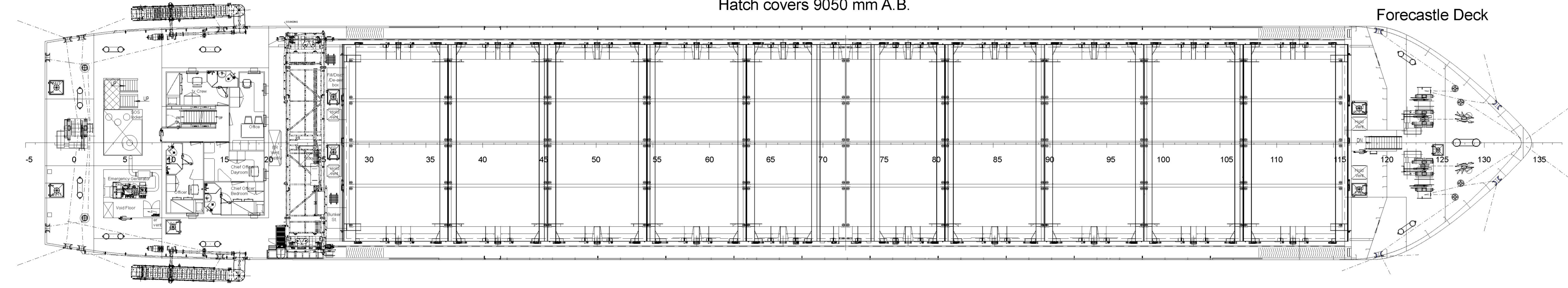


Poopdeck 7800 mm A.B.

Hatch covers 9050 mm A.B.

Forecastle Deck

Topdeck 16100mm A.B.

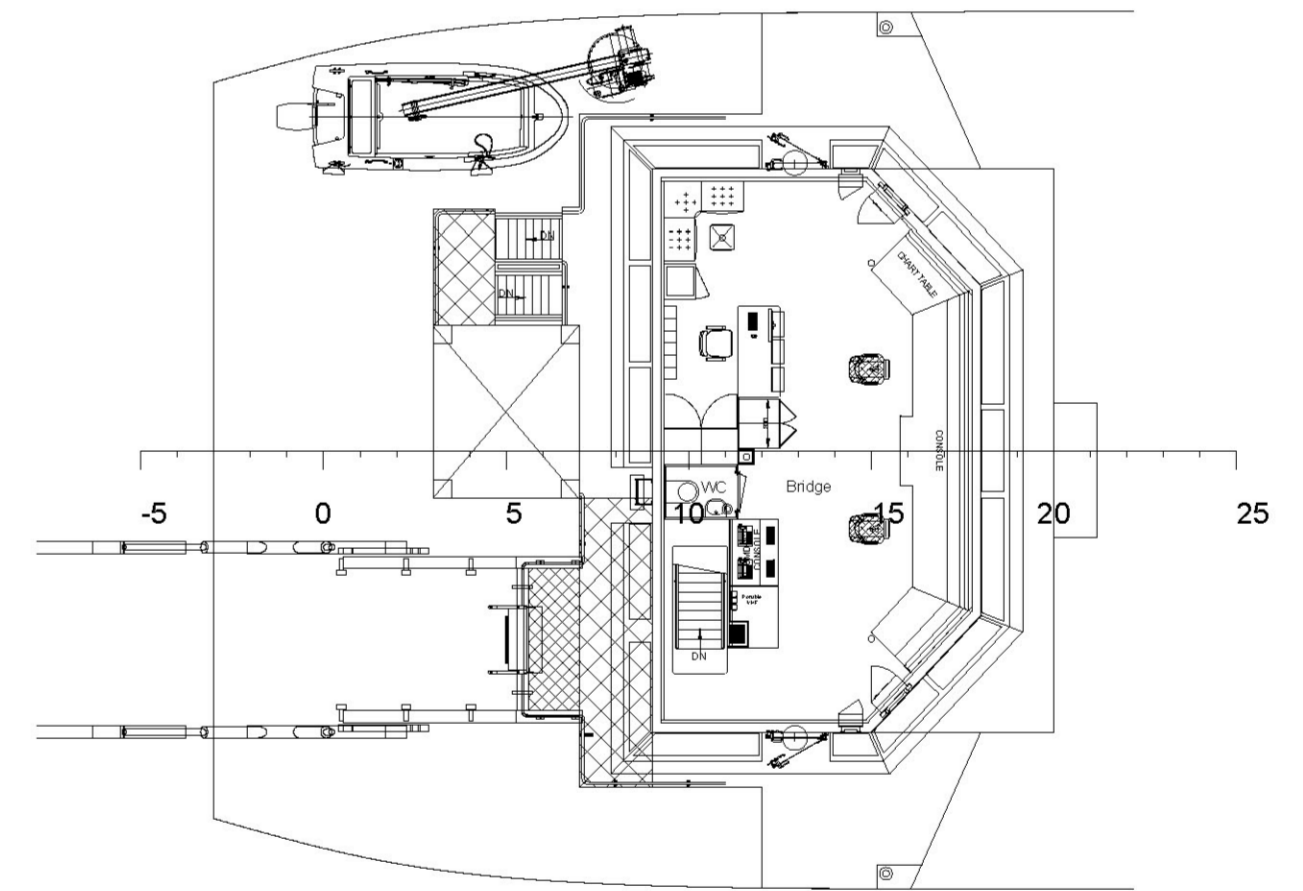
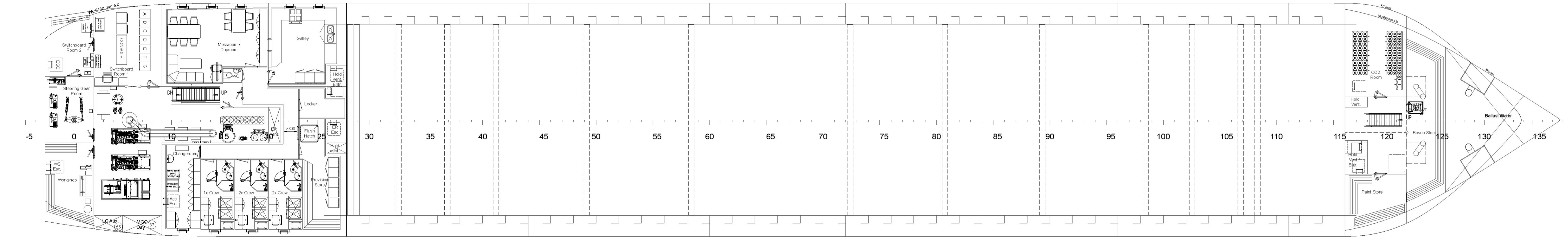


Tweendeck 5180 mm A.B.

Main deck 7100 mm A.B.

Tweendeck 5640 mm A.B.

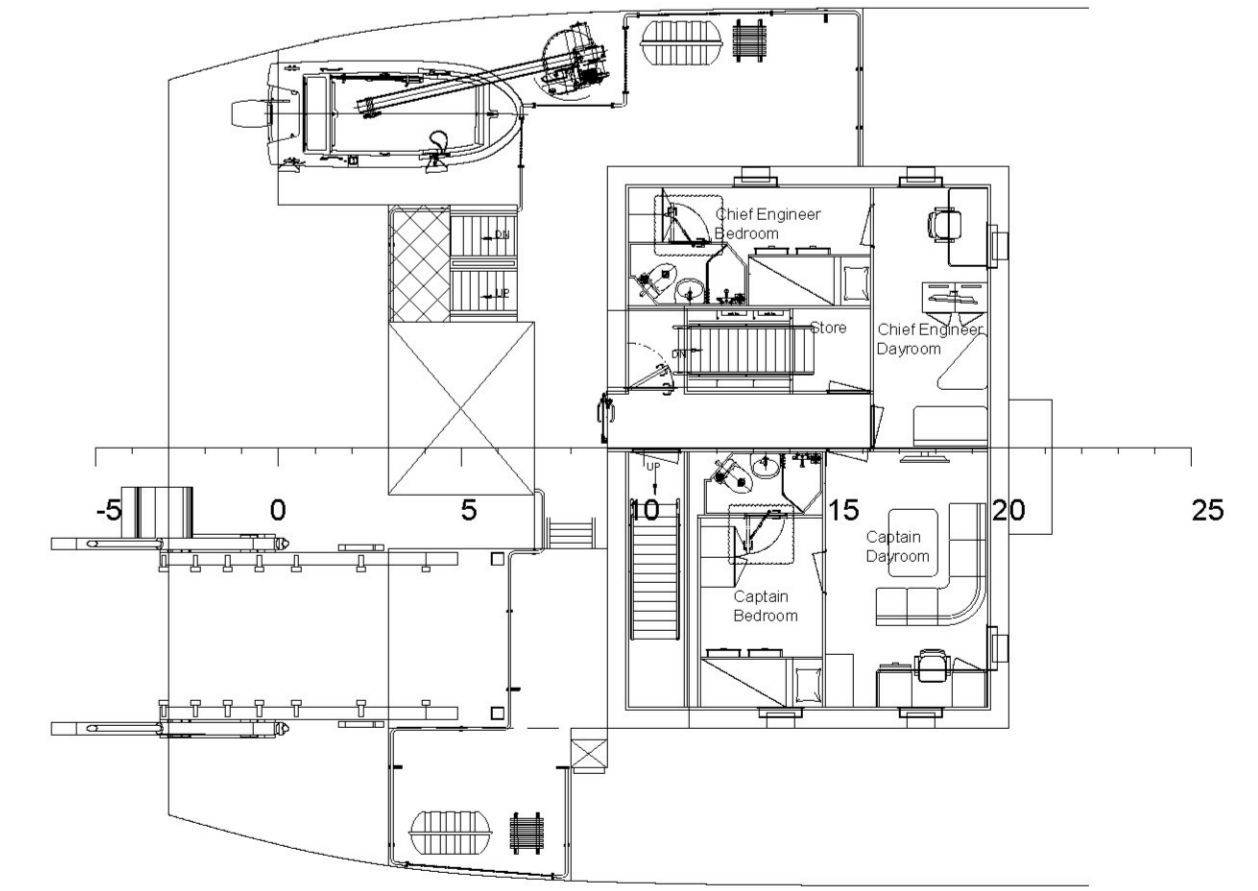
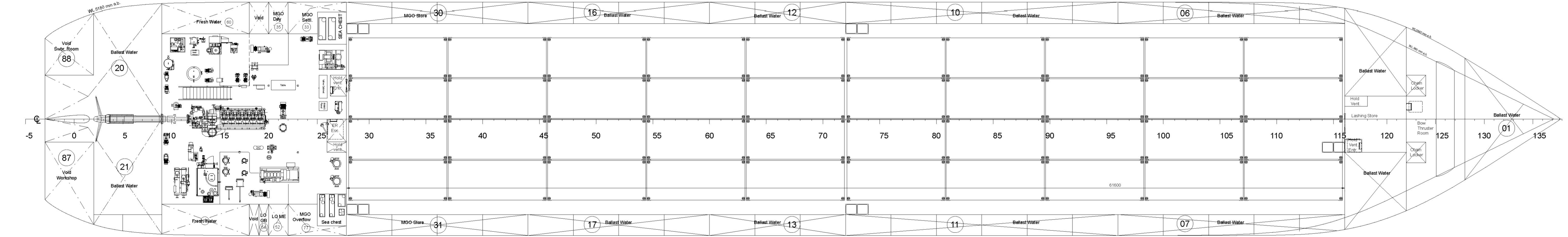
Bridgedeck 13200mm A.B.



Above Tanktop 1460/2060 mm A.B.

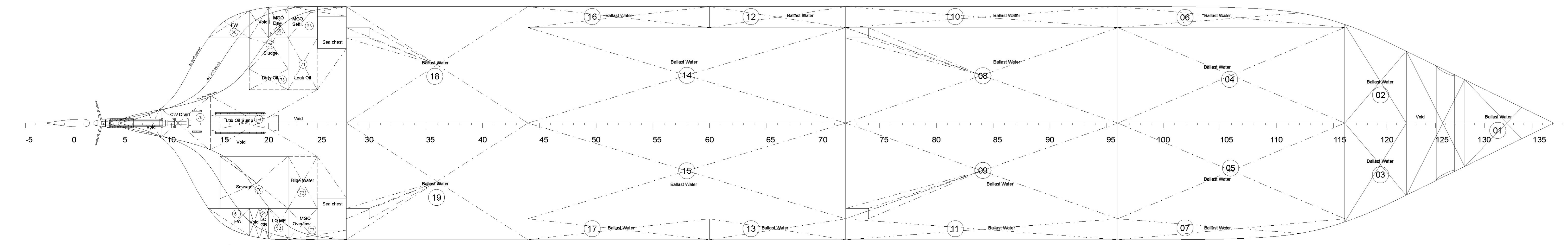
Above Tanktop 980 mm A.B.

Boatdeck 10500 mm A.B.



Below Tanktop 840/2060 mm A.B.

Below Tanktop 980 mm A.B.



**General particulars**

Length over all	93,50 m
Length between perpendiculars	91,70 m
Breadth moulded	14,40 m
Depth moulded	7,10 m
Design draught	5,18 m
Deadweight All Told (approx.)	4400 t
Gross Tonnage (max.)	2987
Net Tonnage (approx.)	1415
Hold capacity (approx.)	5444 m <sup>3</sup>
	192253 cuft
Main engine (approx.)	1176 kW
Speed at design draught, 85% MCR, 15% sea margin	10,0 knots

**HULL NUMBERS:**  
 - H-1367 (39041N)  
 - H-1368 (39042P)

		Lorentzpark 3A 9351 VJ Leek The Netherlands	
Scale:	1:125	GSD No.:	P20023-000-001
Drawn:	BvO	Date:	28-04-2020
Checked:	RS	Date:	02-09-2020
Client:	KTU Shipyards		
Title:	General Arrangement Plan 4400 TDW Single Hold Coastal Liner		
Drawing No.:	P20023-000-001	Sh.:	1/1
Rev.:		Rev.:	E